

Bethlehem Township

Northampton County, Pennsylvania



WINTER 2025



INSIDE THIS ISSUE

Message from the Board of Commissioners.....3	Why Should I Care About Street Trees?.....4	Bethlehem Township Volunteer Fire Co11
Directory.....3	Important Updates.....6,7	Stormwater Solutions.....12
Meeting Schedule3	Picnic Pavilions Rentals For 2025.....7	Snow & Ice Are On The Way..... 14,15
Christmas Tree Recycling.....3	Winter Storm Facts8	How Can I Help You?16
Yard Waste Recycling Center.....4	Bethlehem Area Public Library10	Christmas Tree Safety18

Visit us at: bethlehemtownship.org

Update your fireplace in as little as a day!



WOOD – PELLET – GAS
Install and Service of
Fireplaces, Inserts, and Stoves

Stop by or call today!

Schnecksville
4405 Pennsylvania Dr.
610-224-5050
Bechtelsville
834 Route 100 N.
610-367-4488
Lancaster
385 E Roseville Rd
(223) 529-6877



Hearth & Home

HEAT & GLO
No one builds a better fire
VERMONT CASTINGS **HARMAN**

www.kringonline.com

Feel the Freedom of a *Fresh Start*



Call for Tours: 610-625-4885 x407
www.moravianvillage.com

admoyer.com



DECKS • WINDOWS • DOORS • KITCHENS • MILLWORK • MORE!

GILBERTSVILLE (610) 367-2036 **POTTSTOWN** (610) 327-1120 **BETHLEHEM** (610) 868-2010 **KUTZTOWN** (610) 683-7391

Green Pond Nursery, Inc.

610-252-5521

5301 Green Pond Road
Easton, PA 18045

Mulch • Soil • Deco Stone

Delivery Available

COOKE INSURANCE AGENCY

Family Owned For 49 Years
Personalized and Friendly Service



- AUTO • LIFE
- HOME • BUSINESS

Please Call Us For A Free Quote

606 Stones Crossing Road, Easton, PA 18045
Located in Palmer Township, just 1.5 miles from Route 33

610-258-9675
www.CookeInsuranceAgency.com

Dale Koehler & Sons Farm LLC

Grain
Beef
&

Farm Stand

Growing in Bethlehem Twp. Pa. Since 1789

610-868-3742

4209 Freemansburg Avenue

Open

Monday-Saturday: 9am-6pm
Sunday: 10am-5pm

*Specializing in beef, pork, lamb, eggs,
honey, cheese, seasonal produce & much more!*

Bring this ad to the store to receive \$5.00 off your order



Bethlehem Township Municipal Building

DIRECTORY

Administration.....	610-814-6405
Community Center	610-332-1900
Community Development...	610-332-1900
Finance/Billing	610-814-6460
Physical Plant/Sewer	610-814-6420
Police (Admin).....	610-814-6426
Police (Dispatch).....	610-759-2200
Public Works	610-814-6442

Holidays

The Municipal Offices will be closed
Wednesday January 1st 2025

Board of Commissioners

John Gallagher
Michael Hudak
DeAnn Lawrence
John Merhottein



It is our pleasure to present to you Bethlehem Township's winter newsletter. This document contains valuable information regarding your local government operations and services, as well as advertisements from local businesses and organizations.

As this publication goes to print the Board of Commissioners, the township's legislative body, is preparing to adopt a budget for 2025. The budget and related documents are available for review on the township's website, www.bethlehetownship.org. Click on Departments, then Finance, then Budget/Audit to access those files.

And please check out the Bethlehem Township Community Center's website at www.bethlehetownship.org/btcc/ for full information on recreation activities, fitness classes, and other offerings.

We wish you a safe, healthy, and prosperous 2025.

The Township of Bethlehem Board of Commissioners and staff

MEETING SCHEDULE

Board of Commissioners	1st and 3rd Monday	Monthly	7:00 pm
Recreation Committee	2nd Monday	Monthly	6:00 pm
Planning Commission	4th Monday	Monthly	7:00 pm
Zoning Hearing Board	Last Wednesday	Monthly	6:30 pm
Environmental Advisory Council	3rd Thursday	Monthly	7:00 pm

CHRISTMAS TREE RECYCLING

Bethlehem Township will be accepting Christmas Trees at the Yard Waste Recycling Center during regular center hours.

- Trees will not be picked up at curbside.
- Residents should bring proof of Township residency (driver's license).
- The Center is located next to the Public Works Facility at 4450 Falmer Drive.
- All decorations and lights must be removed prior to dropping off your trees.
- In the event of winter precipitation, the Center may be closed so Public Works personnel can tend to the streets. It is recommended to call to check the hours if a storm is forecasted.
- Questions regarding this program should be referred to:



Public Works Department - 610-814-6442

BETHLEHEM TOWNSHIP YARD WASTE RECYCLING CENTER

Bethlehem Township Recycling Center Regulations:

UPDATE: Beginning January 1, 2020 Contractors and Landscapers will no longer be permitted access the yard waste center. The center will also not allow trailers larger than two axle that are longer than 10 feet or large trucks. Residential use only. Must show documentation of residency.

- The Center only accepts tree branches, shrubbery trimmings, vegetable plants, and flower plants
- Tree stumps, and shrub roots with dirt as well as grass clippings are NOT accepted.
- Branches up to 12 inches in diameter are accepted. Branches should be no longer than 4 feet.
- Residents are responsible for unloading their materials and emptying any containers.
- Containers must be taken home with the resident.
- Composted leaf mulch and fresh wood chips are available for residents to take home and use. The Township does not guarantee the quality of the recycled materials.
- The Township is not responsible for the loading of any of the recycled materials.

The Bethlehem Township Recycling Center is located behind the Public Works Facility at 4450 Falmer Drive.

Questions regarding the Recycling Center should be referred to: 610-814-6442.

Yard Waste Drop-off Facility Hours

Monday— Wednesday—Friday
Noon to 4PM

Saturday—10AM to 3PM

Sunday—1PM to 4PM

Hours of operation may be dependant on weather conditions. Contact the Publics Works Department (610-814-6442) during bad weather for any changes or cancellations.

Why Should I Care About Street Trees?

Street trees offer many benefits to the community. They help decrease flooding, assist with safe road design, create walk appeal, clean our air, and increase property values, to name a few of them. Although street trees are required to be planted by the developer when a new subdivision is constructed, the maintenance of the street tree is the responsibility of the property owner. Regular pruning, especially in the first few years after transplanting will encourage the tree to grow up rather than out. Lower branches should be pruned so that sidewalks are not blocked (at least 8 feet above the sidewalk). If the limbs hang over the street, consider taking off any branches that do not provide at least 12 feet of clearance above the road. This also applies to any double frontage lots that have trees along the rear property line. The material trimmed from these trees can be brought to the Yard Waste Center on Falmer Drive. Proper care and maintenance of your street tree provides value to your neighborhood. If you have any questions, please call the Community Development Department at (610) 814-6435.





1124 Linden St.
Bethlehem PA 18018
484.856.8200



Stacy Rivera
Realtor®

610.570.5329 (m)
sriverahomes@yahoo.com
MorganelliProperties.com





WE MAKE FRIENDS BY ACCIDENT

smittysofpalmer.com

Smitty's has been serving Palmer Township for more than 35 years. And just as car repair has changed, we have changed too. Our latest changes are intended to make sure your service experience is the best you've ever had. Period. The next time your car makes a sound or simply needs a tune-up, stop in. We'd love to see you.

Enjoy **FREE Towing*** with Smitty's! We'll tow your standard vehicle to our shop at no charge, as long as Smitty's repairs your vehicle.*

610-258-5297 8AM - 5PM or 610-258-9100 5PM - 8AM

*MUST BE PRESENTED FOR SERVICE. LOCAL TOWS ONLY. STANDARD TOWING RATES APPLY FOR ANY VEHICLE NOT REPAIRED. COUPON EXPIRES MARCH 31, 2025



3301 Freemansburg Ave Easton, PA 18045 | 610.258.5297



THANK YOU TO THE BUSINESSES

This publication is produced at no cost to Bethlehem Township residents thanks to the generous sponsorship of the businesses listed throughout the newsletter. The Township recognized these businesses as community supporters and encourages residents to also suggest these local businesses with their patronage.

The smarter way to shop...

- Medicare Advantage
- Medicare Supplement Plans
- Medicare Prescription Drug Plans

**health
markets.**

For personalized service call
(610) 216-0787



Ryan Stocker

Licensed Insurance Agent

(610) 216-0787

RStocker@HealthMarkets.com

HealthMarkets.com/local-health-insurance-agent/rstocker/



HealthMarkets Insurance Agency, Inc. is licensed as an insurance agency nationwide except in MA. Not all agents are licensed to sell all products. Service and product availability varies by state. Sales agents may be compensated based on enrollment. No obligation to enroll. ©2024 HealthMarkets 48788b-HM-0724

\$2 OFF

CLASSIC WASH

Enter Code **1188** Prior to Payment.

Expires 10/22/24

Now only \$10! (originally \$12)

Classic Exterior Wash includes: Wheel Blast, Spot Free Rinse, plus **FREE** use of Vacuum!



SparkleCarWash.com

OPEN DAILY: 7 AM TO 8 PM

3808 Easton-Nazareth Hwy.
Easton • 484.626.1513
Behind Wawa

1070 Congdon Ave.
Beroudsburg • 570.424.9687
Behind Wawa

3188 PA-040
Mount Pocono • 570.355.5015
Behind Wawa



Important Updates

FINANCE DEPARTMENT

Keystone Collections Group collects your Earned Income Tax – you may choose to file online www.KeystoneCollects.com. Their tax support line may be reached by calling 888.328.0565.



We receive calls from residents that are concerned about postal delays and receiving timely credit for their payments. Postmark dates are honored for timely credit. Also, we retrieve items placed in the municipal drop box on a daily basis and you will receive same day credit.

STORMWATER FEE

Effective 2022, a new Stormwater Fee will be mailed out annually to all residents and businesses. The Township is utilizing Berkheimer to process and collect the fees.

All billings are sent to the property owner. Discount, Base and Penalty Due Dates and Amounts are printed on all bills. All payments are to be directed to Berkheimer, not the Township.

Unpaid bills sent for delinquent stormwater fee collection as of January 1st each year

Stormwater fee bills are mailed out by February 1st each calendar year.

- For more information, visit bethlehetownship.org/stormwater, email stormwater@bethlehetwp.com, or call (610) 814-6491.
- Make your check or money order payable to: HAB-MISC. no cash payments accepted.
- You may pay using the berk app or online at WWW.HAB-INC.COM/PAYMISC by credit card, checking or savings account or via phone at 866-225-8451 (a third-party fee will apply)

SEWER PAYMENT OPTIONS

Pay directly at municipal office, by mail or drop box (in front of municipal office main entrance)

Online Bill Pay Service for Sewer Bills*****

We have launched new features that allow you to access and manage your Bethlehem Township sewer bills online at your convenience. View and pay bills online, receive email reminders when a payment is due, enroll in Auto-Pay, receive Paperless Billings and even Pay by Text. You will be asked to either register as a new online customer or simply "Pay Now." If using Pay Now you may always register at another time to take advantage of more features as mentioned above.

Links are provided on <https://bethlehetownship.org/payments>. No fee for EFT payments via checking/savings account. There is a "convenience fee" of 2.95% for credit/debit card payments (\$3.95 minimum fee). Pay by phone using 1-855-985-1094.

SEWER BILLINGS

*****Important Sewer Meter Read Reminder***:** Please ensure proper access/clearance for routine sewer meter readings; bushes, flower beds, animals, etc. Not only is the removal of obstructions appreciated it may reduce further costs should additional staff time be required to schedule follow-up reads.

Sewer Rates – ***Quarterly Rates ***

- Current rates (read dates on/after 01/01/24) \$55.75 1st 6,000 gallons plus \$7.50 for each 1,000 additional gallons
- Current rates are published on the township website Finance section. Current rates also printed on sewer billing.

Payable to "Bethlehem Township". Penalty of 10% applied if paid after due date

SEWER DEDUCTION METERS

Deduction Meters should be considered if you use a lot of water for outside purposes (i.e. - filling a pool, watering a lawn). These meters will deduct the water consumption units used outside the home from your total water consumption, thereby reducing your sewer bill to account for water that did not enter the sewer system directly.

Rentals are \$5.00 per week, plus a \$100 deposit, which will be returned to you when the meter is returned in good condition. Purchase of a meter is \$229, charge subject to current pricing. The homeowner must install the meter. Questions about deduction meters can be directed to the Physical Plant office at 610.814.6420, or download the information packet from our site. Please check with The Department of Environmental Protection's Drought Information Center before renting a meter.

REAL ESTATE TAX PAYMENT OPTIONS

Pay directly at municipal office, by mail or drop box (in front of municipal office main entrance)

Online Bill Pay Service for Real Estate Tax Bills*****

Links are provided on <https://bethlehemtownship.org/payments>. No fee for EFT payments via checking/savings account. There is a "convenience fee" of 2.95% for credit card payments (\$1.00 minimum fee). This new online tax payment option operates on a "Pay Now" basis. No registration.

REAL ESTATE TAX BILLS (Payable to "Bethlehem Township")

- All billings are sent to the property owner. Discount, Base and Penalty Due Dates and Amounts are printed on all bills.
- 2024 tax millage rate – 7.74 mills (7.59 general purpose mills plus 0.15 fire tax mills)
- Unpaid bills sent for delinquent tax collection as of January 1st each year
- Tax bills are mailed out by February 1st each calendar year.
- Please contact Finance Dept. if you are concerned you have not received annual tax bill.



Finance Customer Support Line 610.814.6460

Finance related questions may be directed to the following email addresses:

taxes@bethlehemtp.com finance@bethlehemtp.com billing@bethlehemtp.com

PICNIC PAVILIONS RENTALS FOR 2025



Please note that all rentals will be handled on line. The public will be able to check availability of each of the pavilions on the website and book a date and pay right on the web site. Please check the township website or upcoming newsletters for information on how to rent a pavilion on line.

To reserve, please visit
<https://www.bethlehemtownship.org/pavillion-rentals>

The following is a brief description of each pavilion:

PAVILION # 1

Seats approx. 250 people
Has electricity and restrooms
Is visible from Farmersville Road
Rents for \$125(resident),
\$200(non-resident); refundable
security deposit of \$150
2 Horseshoe pits
2 Volleyball courts

PAVILION # 2

Seats approx. 150 people
Has electricity –
restrooms in the Community Center
Is located next to the
Community Center
Rents for \$100(resident),
\$135(non-resident); refundable
security deposit of \$100
1 Volleyball court

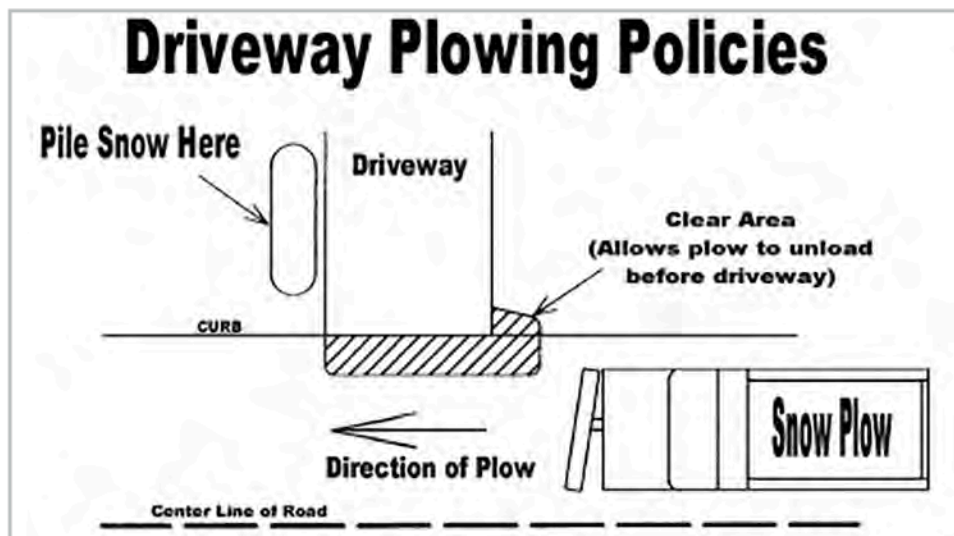
PAVILION # 3

Seats approx. 35 people
No electricity-
restrooms in the Community Center
Is located north of Pavilion # 2
Rents for \$50(resident),
\$60(non-resident); refundable
security deposit of \$50

WINTER STORM FACTS

DO:

- ✓ **Clear the sidewalks** around your property of any snow and/or ice after a storm.¹
- ✓ **Clear around fire hydrants.** If your house is on fire, you'll want the fire company to be able to find them.
- ✓ **Keep children, pets and yourself indoors** when you see the plow trucks coming. Snow expelled from the plow can cover small children and pets.
- ✓ **Make sure basketball standards** are two feet behind your lot line (not the curb line).²
- ✓ **Prepare for winter's storms NOW.** Purchase bottled water, batteries and non-perishable foods that can be eaten without cooking in the event of a power outage.
- ✓ **Prepare your car for winter.** Keep your fuel tank full and make sure your wipers and heater are working. Keep an extra pair of gloves, a hat, a blanket and some water in your car in case you get stranded.
- ✓ **Allow plenty of time for traveling in winter weather.** It's more important to "Arrive Alive" than to arrive on time! Take extra caution on bridges and on/off ramps. These areas freeze first.
- ✓ **Understand that sodium chloride (de-icing salt) requires heat** (from the sun, traffic) to be activated and melt the ice. Once the temperature falls to a certain degree, the salt won't work at all.
- ✓ **Understand that every winter storm is unique;** that we can't beat Mother Nature; that our drivers do their best in order to clear the streets promptly; that they work many long hours away from their homes and families so that you can travel safely on the Township's over 110 miles of roadway and that we appreciate your patience and understanding.
- ✓ **Follow the diagram above for guidance on shoveling your driveway.** If you must clean your driveway prior to the completion of our plowing, there are two strategies you can try to alleviate double shoveling. If you leave the first five (5) feet of your driveway (closest to the street) un-shoveled until we are finished, you will only have to shovel this section once. Also, a cleared area on the side of the driveway from which the truck will approach, provides an area for the snow to unload from the plow before it reaches your driveway. However, this area must be AT LEAST 10 feet long and 4 to 5 feet wide, depending on the amount of snow that has fallen. This area must also be off the side of the street in order to be effective.



DON'T:

- ✗ **Operate snowmobiles, all-terrain vehicles, dirt bikes or scooters** on the streets.³
- ✗ **Allow children to make tunnels in snow banks along the street.** It could result in serious injury if the banks are moved while children are hiding in the tunnels.
- ✗ **Shovel, plow or use a snow blower to deposit snow into the street right-of-way.**⁴
- ✗ **Assume that just because you saw the plow truck go down your street, that we are finished plowing your street.** While it continues to snow, we will maintain an open driving lane down the streets and when the storm is finished, we will come back to widen the roadway. The Township will plow from "curb to curb" so our storm drains are opened and there is room to push back additional snow from the next storm. If the storm drains aren't open when the snow melts, flooding can occur.

¹Bethlehem Township Ordinance 13-96, Part 3, Section 302

²Bethlehem Township Zoning Ordinance, Section 2003 D, #16b

³PA Vehicle Code Title 18, Chapter 77, Sub-Chapter C, Section 7721

⁴Bethlehem Township Ordinance 13-96, Part 3 Section 303

FOSTER HOPE – Become a Foster Parent



KidsPeace

www.fostercare.com/bethlehem



Broughal & DeVito L.L.P.

Law Offices

38 West Market Street • Bethlehem, PA 18018

Telephone: 610-865-3664 • Fax: 610-865-0969

lawyers@broughal-devito.com

Real Estate • Zoning • Development • Business • Commercial • Corporations
 Personal Injury & Death Cases • Litigation • General & Commercial
 Labor & Employment • Wills • Estates • Trusts

Dignified, personalized service in an intimate, elegant setting.



John M. Finegan, Jr. - *Supervisor*
 John M. Finegan, Sr. - *Funeral Director*

610.258.7021
 4080 William Penn Highway
 Easton, Pennsylvania 18045



EASTON, PENNSYLVANIA

www.FineganFuneralHomePA.com



Celebrating 22 Years!

ADVANTAGE FENCE

\$250 Off with \$5,000 or more new installation

SPECIALIZING IN ALUMINUM & VINYL • RETAIL - INSTALLATION

www.advantagefence.net • 610-252-1984

2045 Bushkill Drive, Easton, PA 18040

Creating Beautiful & Distinctive Landscapes in Your Back Yard!



AtlanticRIDGE

LANDSCAPE DESIGN - BUILD

1511 Sullivan Trail • Easton, PA 18040

610-252-8833

Come Visit Us at www.Atlanticridge.com

PA Home Improvement Contractor #000767





SWEET 16S • PROMS • HOLIDAY PARTY • WEDDINGS



OPEN AIR ENCLOSED SELFIE CIRCLE SELFIE STAND MIRROR BOOTH 360

ROCKIN' Photobooth

6 Styles of Fun to choose from!

Text/Call 610.922.1460

RockinPhotobooth.com



Scan Me

BETHLEHEM AREA PUBLIC LIBRARY



JOIN A BOOK CLUB OR WRITING GROUP!

BAPL has a variety of book clubs and writing groups, including ones that meet virtually and one that is hosted by our Coolidge librarian. Check out bapl.org for schedules for these events and other activities at Coolidge!

CHILDREN'S EVENTS AT BAPL COOLIDGE

Stop by the library at the Coolidge Building for fun, family-friendly activities! Enjoy storytimes, crafts, and hands-on science activities set up throughout the library for your family to explore together. Create your own festive craft and discover books and movies perfect for a cozy weekend at home. Join us for engaging stories and activities that make every visit to the library memorable!



BORROW E-BOOKS FROM THE LIBRARY

Your library card provides access to a huge collection of free e-books to download on your smartphone, computer, or other device. The service is called cloudLibrary™, and it can be downloaded from the app store or at www.yourcloudlibrary.com. You just enter your library card number and begin borrowing free e-books right away!



There's always something going on at BAPL -- use the tools below to stay in the know about new and exciting offerings at your library.

Social Media: [@pabapl](https://www.instagram.com/pabapl)

FOLLOW US

Newsletter Signup: bapl.org/newsletter

Bookmobile Schedule: bapl.org/the-bookmobile



Bethlehem Area Public Library Locations

Main Library

11 W. Church Street
Bethlehem, PA 18018
610.867.3761

South Side Branch

400 Webster Street
Bethlehem, PA 18015
610.867.7852

BAPL Coolidge

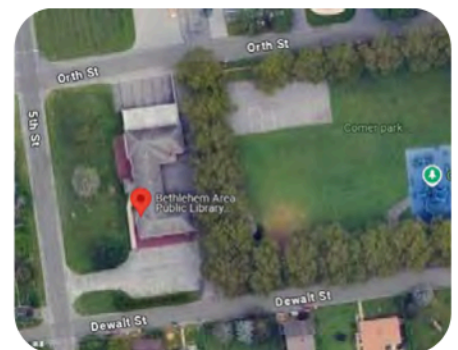
2740 Fifth Street
Bethlehem, PA 18020
484.892.6267

Books on the Hill

Spiegel and Stanley Streets
Fountain Hill, PA 18015

BAPL COOLIDGE

located at 2750 5th St. in Bethlehem Twp.



BETHLEHEM TOWNSHIP VOLUNTEER FIRE COMPANY



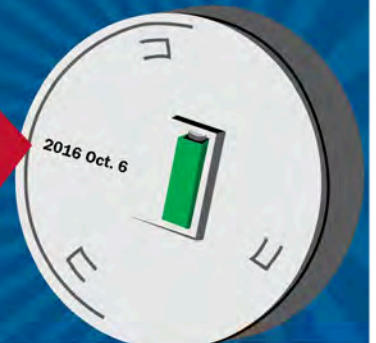
As we move into 2025, the Bethlehem Township Volunteers/Members would like to thank the community and all of our residents for their continued support. The Bethlehem Township Volunteers were very busy last year with responding to over 1,000 calls for service and participated in over 40 community events. This included Community Days and fire prevention events at local schools, daycares and other local businesses within Bethlehem Township.

We had our first annual "Christmas in July" event at our firehouse benefitting our local Elementary Schools. We excitedly opened our station to our friends and neighbors of the community. A very special friend, the man himself, Santa Claus made an appearance wearing his swim trunks and happily took photos with all our residents and in return we collected school supplies for both Miller Heights and Farmersville Elementary School. If you couldn't find Santa on the boat, he was walking around the crowds of kids and even ended up taking a turn in the dunk tank.

The Bethlehem Township Volunteers/Members would like to wish all of our residents a very Happy and Healthy New Year!



**Don't Wait —
Check the Date!**
Replace Smoke Alarms Every 10 Years



STORMWATER SOLUTIONS

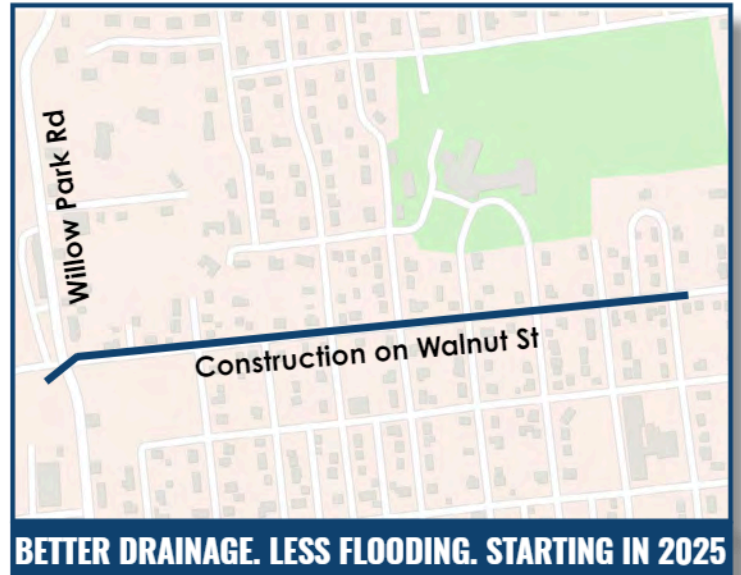
UPDATE ON THE WALNUT STREET DRAINAGE IMPROVEMENT PROJECT

FLOODING CHALLENGES

The Walnut Street and Willow Park Road area experiences flooding issues due to its lack of stormwater infrastructure causing road closures and damage to property. As part of the Township's efforts to improve stormwater management, Bethlehem Township Municipal Authority **began construction on the Walnut Street Drainage Improvement Project.**

WHAT'S BEING DONE

This project will address ongoing flooding issues by installing and upgrading stormwater infrastructure. These improvements, **expected to be completed by 2025**, will help reduce flooding during average rain events, from 10th Street to Willow Park Road. This work represents a \$3.5 million investment in the Township's stormwater management, made possible through stormwater fees and support from additional funding sources. To learn more about the Township's stormwater projects visit the Township's stormwater page on their website: <https://bethlehemtownship.org/stormwater-projects>



INVESTMENTS IN STORMWATER INFRASTRUCTURE ON WALNUT STREET & WILLOW PARK ROAD RESULT IN



FLOOD MITIGATION:
reduced flooding during regular rain events.



LESS ROAD CLOSURES:
Improved drainage to help keep roads open.



STREET IMPROVEMENTS:
Repaving after project completion.

LEHIGH VALLEY'S ACT 167 WATERSHED MANAGEMENT PLAN

The Lehigh Valley Planning Commission is creating a county-wide plan to manage all watersheds under one comprehensive strategy. This two-year effort will replace separate plans, improving flood control and stormwater management on a regional level. Learn more at: <https://lvpc.org/natural-%2B-water-resources>

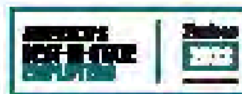
**TOP
WORK
PLACES**
2023-2024

Once Again...
**Region's Only Health Care
Top Workplace**

When you have the **best employees** in the country, it is easy to become a **Top Workplace**.

We are **#StLukesProud** to be recognized **ONCE AGAIN** as a Top Workplace health care organization locally, regionally, and nationally.

Our employees deserve this recognition as our most valued asset. As an employer of choice, St. Luke's prioritizes the health and well-being of our employees so they are able to provide the highest quality care and services to our patients. This honor highlights St. Luke's as an employer who listens to, cares for, and supports its employees.



Interested in joining an award-winning organization that **ALWAYS** puts its employees first?

Visit our career site today and explore our growing list of opportunities.

sluhn.org/careers

SNOW & ICE ARE ON THE WAY . . . BE PREPARED!



As we enter into the winter season, we would like to take this opportunity to discuss the Public Works Department's Winter Street and Road Program. It is the Department's policy to begin salting and cindering the roads as soon as it becomes necessary. The Police Department, who are continually traveling the roadways, make the determination as to when the streets become unsafe, and call our department. We will begin plowing the streets within two (2) hours after the snow has stopped falling, if needed. The snow removal policy is as follows:

- FIRST PRIORITY:** Snow Emergency Routes, emergency services areas, school routes & all main arteries
- SECOND PRIORITY:** All alternate streets
- THIRD PRIORITY:** Dead ends and cul-de-sacs

As new streets are built, they are added to the list. After the initial plowing, it is necessary to have the plow return to widen the driving path. This provides an area to plow additional snow should another storm arrive prior to the melting period. It will also uncover the storm water inlets to provide for proper drainage as the snow melts. So, just because you saw the truck go past your driveway, don't automatically assume that we are done plowing your street.

DID YOU KNOW??

- I. **That according to Bethlehem Township Ordinance 6-94, Section II, Part 7 -**
 - "It shall be unlawful to park, or leave unattended motor vehicle, or to allow a motor vehicle to remain parked or unattended, on the main paved portion of any cul-de-sac street in the Township of Bethlehem when there has been a snow fall of four (4") inches or greater, until such time as the cul-de-sac has been cleared of snow.
 - "After a Snow Emergency is declared, it shall be unlawful, at any time during the continuance of the emergency, for any person:
 - a. to park or leave unattended a motor vehicle, or to allow a motor vehicle to remain parked or unattended, on a Snow Emergency Route
 - b. to operate a motor vehicle on a Snow Emergency Route unless that vehicle is equipped with snow tires or chains
- II. **That it is ILLEGAL** to shovel, plow or use a snow blower to deposit snow into the street right of way.
- III. **That it is the responsibility of property owners** to clear sidewalks, which abut their property, of snow and/or ice after a storm.
- IV. **That it is the responsibility of property owners** to clear around fire hydrants. These measures are for the safety of the public as well as that of the property owner.
- V. That Bethlehem Township has adopted **Resolution No. R28-92 which states that damage to any mailbox, fence post, shrubbery**, etc. by the funnel of snow expelled from the plow will not be repaired by the Township. If a Township vehicle or plow makes physical contact with such property and causes damage, the item will be replaced at the Township's expense. Any damaged should be reported to the Public Works Department and it will be evaluated by the Chief of Public Works. You will be notified by mail of his decision. Also, per our zoning ordinance, basketball backboards must be two feet in from your lot line (not street line). They hinder our drivers from effectively clearing the roads when they are illegally placed.
- VI. **It is ILLEGAL** and very unsafe to operate snowmobiles or all terrain vehicles on the streets.
- VII. **For your own safety**, when you see the plow trucks on your street, keep yourself, your children, and your pets indoors. Snow expelled from the plow could cover small animals or knock down children. Also, allowing children to make tunnels in snow banks along the street could result in serious injury if the banks have to be moved and children are hiding inside the tunnels.
- VIII. The Following streets have been established as **Snow Emergency Routes** in Bethlehem Township

STREET	FROM	TO
Bayard Street	Hope Road	Sheridan Drive
Brodhead Road	Hecktown Road	Township Line Road
Carter Road	Willow park Road	Farmersville Road
Church Road	William Penn Highway	Country Club Road
Country Club Road	Church Road	Township boundary
Dundee Road	Margate Road	Highfield Drive
Farmersville Road	Easton Avenue	Freemansburg Avenue
Hecktown Road	Easton Avenue	Oakland Road
Hecktown Road	Green Pond Road	Brodhead Road
Highfield Drive	Dundee Road	Nazareth Pike (?)
Linden Street	Willow Park Road	Freemansburg Avenue
Margate Road	Hecktown Road	Dundee Road

STREET	FROM	TO
Oakland Road	Hecktown Road	Easton Avenue
Ohio Street	William Penn Highway	Freemansburg Avenue
Santee Road	Easton Avenue	Chester Avenue
Chester Avenue	Santee Road	Township boundary
5th Street	Easton Avenue	Freemansburg Avenue
7th Street	Easton Avenue	Carter Road
8th Street	Linden Street	Freemansburg Avenue
9th Street	Linden Street	Freemansburg Avenue
12th Street	Walnut Street	Freemansburg Avenue
Middletown Road	Willow Park Road	Ritter Street
Ritter Street	Middletown Road	Easton Avenue
Walnut Street	Willow Park Road	12th Street

The following streets have been added as **Snow Emergency Routes** by Ordinance 17-15

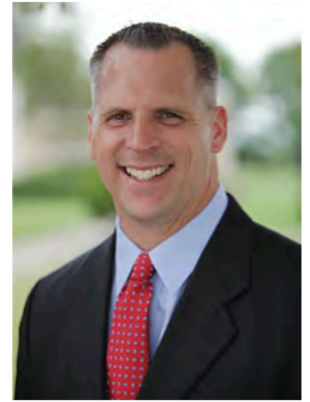
STREETS	FROM	TO
Bethman Road	William Penn Hwy	Farmersville Road
Campbell Drive	Rexford Drive	Green Pond Rod
Canterbury Road	Rambeau Road	Gloucester Drive
Chester Road	Santee Road	Hecktown Road
Chipman Road	William Penn Hwy	Church Road
Country Top Trail	Wagner Drive	Derby Lane
Danberry Drive	Kingsview Avenue	Esquire Drive
Derby Lane	Farmersville Road	Meyer Road
Embur Terrace	Winfield Terrace	King Avenue
Emrick Blvd	William Penn Hwy	Freemansburg Ave
Esquire Drive	Danberry Drive	Southwood Drive
Farmersville Road	Bethman Road	Green Pond Road
Farmersville Road	Freemansburg Avenue	Wilson Avenue
Gloucester Drive	Canterbury Road	Hecktown Road
Green Pond Road	Farmersville Road	Bethman Road
Hampton Road	Freemansburg Avenue	Washington Street
Harvey Road	Country Top Trail	Meyer Road
Hodle Avenue	William Penn Hwy	Penacook Avenue
Keystone Street	Clermont Avenue	Willow Park Road
King Charles Blvd	Farmersville Road	Rexford Drive
King Avenue	Freemansburg Avenue	Embur Terrace
Kingsview Avenue	Freemansburg Avenue	Danberry Drive
Lehigh Street	3 rd Street	Sculac Drive
Meyer Road	Derby Lane	Harvey Road
Penacook Avenue	Ohio Street	Hodle Avenue
Prima Drive	Chipman Road	Westbrook Drive
Rambeau Road	Oakland Road	Canterbury Road
Ranee Street	Church Road	Tiffany Drive
Rau Lane	Esquire Drive	Toursdale Drive
Reeve Drive	Easton Avenue	Rexford Drive
Rexford Drive	King Charles Boulevard	Farmersville Road
Sculac Drive	Freemansburg Avenue	Wilson Avenue
Sheridan Drive	William Penn Hwy	Winfield Terrace
Southwood Drive	Esquire Drive	Toursdale Drive
Tiffany Drive	Westbrook Drive	Ranee Street
Toursdale Drive	Southwood Drive	Rau Lane
Vintage Drive	Farmersville Road	Wagner Drive
Wagner Drive	Vintage Drive	Country Top Trail
Washington Street	Easton Avenue	Hampton Road
Washington Street	Easton Avenue	Freemansburg Avenue
Westbrook Drive	Prima Drive	Tiffany Drive
Wilson Avenue	Sculac Drive	Farmersville Road
Winfield Terrace	Sheridan Drive	Embur Terrace
3rd Street	Freemansburg Avenue	Lehigh Street

- IX. Salt needs the heat generated by tires on the street to activate and melt the ice. Also, once the temperature has reached a certain low level, salt will not work at all.
- X. Our drivers do their best in order to clear the streets promptly. They work many long hours away from their homes and families so that you can travel safely. We appreciate your patience and understanding.

HOW CAN I HELP YOU?

By Rep. Joe Emrick (137th District)

I want to wish you and your family a prosperous, healthy and joyful New Year and take a moment to thank you for your continued trust and support. My staff and I are ready to assist you with a variety of services that make everyday life a little easier, including:



Representative Joe Emrick

- Driver's License and Registration Applications and Renewals.
- PennDOT Paperwork Assistance.
- Birth and Death Certificates.
- Unemployment Compensation Help.
- Property Tax and Rent Rebate Applications.
- Veterans Assistance Information.
- Referrals to Agencies for State-Related Matters.
- Complimentary Notary Services.
- Senior SEPTA Passes.
- Reduced Fee Vehicle Registrations for Retirees.

Please do not hesitate to reach out if you need anything. We are always happy to help!

Nazareth Office:

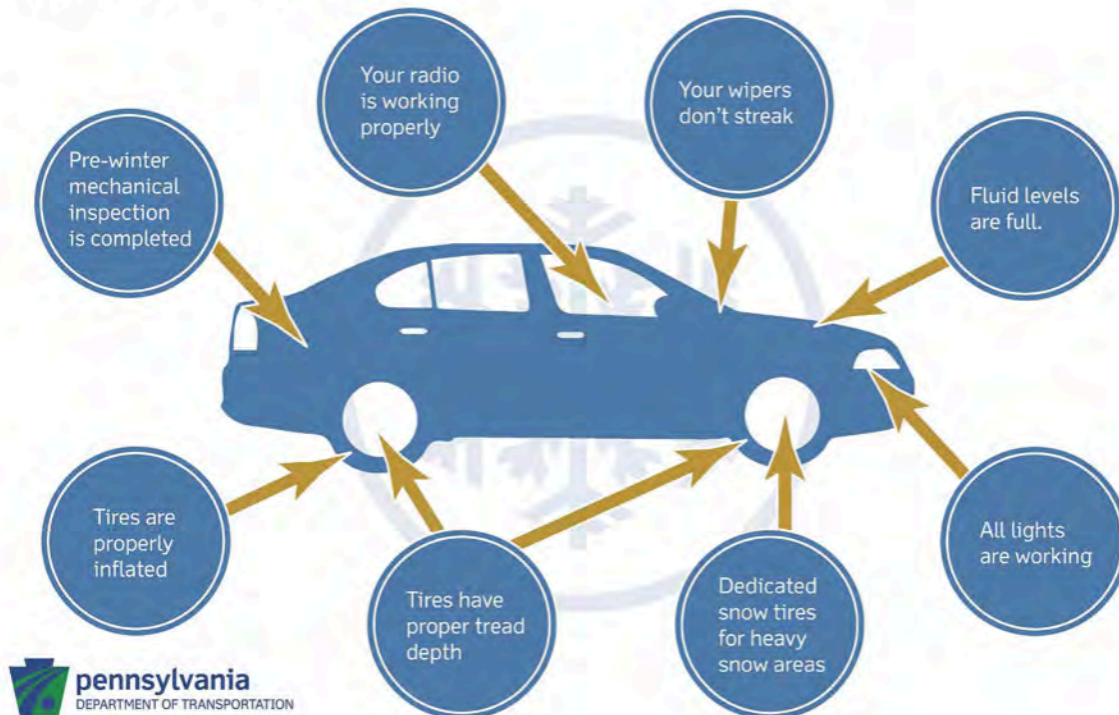
134 South Main St., Nazareth, PA 18064
Phone: 610-746-5090

Palmer Office:

301 Village at Stones Crossing Road, Easton, PA
18045
Phone: 484-544-0146

Getting Your Vehicle Ready for Winter

Motorists should ensure that...



Did you dial up to log on?

Time for a mammogram.



No matter the era, this is your friendly reminder to schedule your annual mammogram at LVHN.org/mammo.



**Lehigh Valley
Health Network**

Now proudly part of Jefferson Health

Christmas Tree Safety



As you deck the halls this holiday season, be fire smart. A small fire that spreads to a Christmas tree can grow large very quickly.



PICKING THE TREE

- Choose a tree with fresh, green needles that do not fall off when touched.



PLACING THE TREE

- Before placing the tree in the stand, cut 2" from the base of the trunk.
- Make sure the tree is at least three feet away from any heat source, like fireplaces, radiators, candles, heat vents or lights.
- Make sure the tree is not blocking an exit.
- Add water to the tree stand. Be sure to add water daily.



LIGHTING THE TREE

- Use lights that are listed by a qualified testing laboratory. Some lights are only for indoor or outdoor use.
- Replace any string of lights with worn or broken cords or loose bulb connections. Read manufacturer's instructions for number of light strands to connect.
- Never use lit candles to decorate the tree.
- Always turn off Christmas tree lights before leaving home or going to bed.



After Christmas

Get rid of the tree after Christmas or when it is dry. Dried-out trees are a fire danger and should not be left in the home or garage, or placed outside against the home.

Check with your local community to find a recycling program.

Bring outdoor electrical lights inside after the holidays to prevent hazards and make them last longer.

FACTS

- ! **Almost one third** of home Christmas tree fires are caused by electrical problems.
- ! Although Christmas tree fires are not common, when they do occur, they are more likely to be serious.
- ! A heat source too close to the tree causes more than **one in every five** of the fires.



Your Source for SAFETY Information

NFPA Public Education Division • 1 Batterymarch Park, Quincy, MA 02169

Your Logo

INNOCENT & INJURED

Aggressive Legal Representation Is A Must

- Automobile/Motorcycle Accidents
- Wrongful Death/Serious Personal Injury
Slips & Falls • Dog Bites
- Personal Injury Negligence Cases
- Worker's Compensation

2571 Baglyos
Circle,
Suite B25
Bethlehem, PA
484-821-1005
snoverlaw.com

Zoom or In Person
Appointments
Available



Michael A. Snover Esq.
ATTORNEY AT LAW

Call For A Free
Consultation

No Fee or Cost
Unless Recovery Made

MICHAEL A. SNOVER ESQ.
ATTORNEY AT LAW

Who's 2021
Who
IN BUSINESS
Lehigh Valley



Therapists You **TRUST!**

**PHYSICAL
THERAPY**
AT StLuke's

4317 Easton Avenue
BETHLEHEM
484-526-3540

StLukesPT.com

ONLY HEATER TUNE UP SPECIAL
\$13
(REG. PRICE \$124)

Edwin Stipe, Inc • 877-337-8473
Exclusions Apply: cannot be used for service fees or labor charges, and not combined with other offers. Offer Expires 10-31-24

**\$130 WATER HEATER INSTALLATION
OR WATER SOFTENER INSTALLATION**
OFF

Edwin Stipe, Inc • 877-337-8473
Exclusions Apply: cannot be used for service fees or labor charges, and not combined with other offers. Offer Expires 10-31-24

\$1300 HEATING & COOLING INSTALLATION
OFF

High Efficiency 95% or Above Heating & Cooling Installation
Edwin Stipe, Inc • 877-337-8473
Exclusions Apply: cannot be used for service fees or labor charges, and not combined with other offers. Offer Expires 10-31-24

130th Anniversary!



EDWIN STIPE, INC.

Plumbing Heating Air Conditioning

The Experience You Need

The Integrity You Deserve

610-258-0201

www.EdwinStipe.com

Free Estimates On New HVAC Systems



12 MONTHS
NO INTEREST
FINANCING
AVAILABLE

Call for details. With
approved credit.



Heating & Air Conditioning
Amana
LASTS AND LASTS AND LASTS!

Master Plumber
PA #031 / NJ#06054
Home Improvement
PA#013611 / NJ13VH0060090



Let's get started today!



Crafted
LANDSCAPES &
EXPERT TREE CARE

Expert Tree Care

- Corrective pruning for aesthetics & structural integrity
- Tree removal
- Storm damage cleanup
- Preserving the natural beauty of trees & landscape
- Crane removal service
- Stump grinding

**Landscape & Hardscape
Design & Installation**

- Brick paver patios
- Boulder walls & steps
- Natural fieldstone & block retaining walls
- Landscape lighting
- Mulch & decorative stone

CraftedLandscaping.com
610-533-9285 • Easton, PA



Bethlehem Township

4225 Easton Ave.
Bethlehem, PA 18020

ECRWSS
Postal Customer

PRSRT STD
U.S. POSTAGE
PAID
PERMIT 527
LEHIGH VALLEY PA



WINTER 2025

This brochure is delivered by the United States Postal Service via carrier route.
For those non-residents receiving this publication, enjoy it with our compliments.

hometownpress

To Place An Ad Call Denise At Hometown Press
215-813-8361 • DeniseOfHTP@yahoo.com

This Community Newsletter is produced for Bethlehem Township By Hometown Press
215.257.1500 • All rights reserved® January 2025



UNITY BANK

© EQUAL HOUSING LENDER | MEMBER FDIC

Grow your \$avings with us!



unitybank.com/cdspecials



JAY MILLER

GENERAL CONTRACTORS, INC.



SINCE 1979

WE BUILD
THINGS THE
OLD FASHIONED
WAY ...

BY HAND.

610-253-4244

JAYMILLERG.COM



REAGLE INSURANCE

REASONABLE RATES AND GREAT SERVICE

*Thank you to our valued clients.
We appreciate your business.*

**AUTO • BUSINESS
PERSONAL • LIFE INSURANCE**



610-258-7216 • REAGLEINS.COM
2912 WILLIAM PENN HIGHWAY • EASTON

